

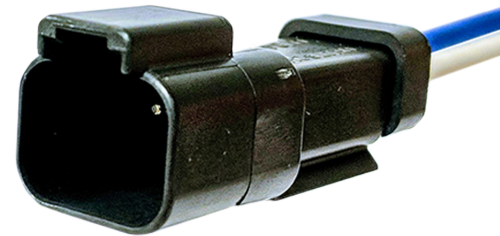


FAN CONTROLLED TEMPERATURE SWITCH

High quality, made in the USA
standard Deutsch connector

Use to cycle DC Fan Motors to Provide
Accurate Temperature Control

Weather Sealed
Vibration Resistant



Use these Temperature Switches to control oil temperature by cycling the cooling fan to maintain the desired entering, or leaving temperature. The temperature switches are designed to be installed in the drain ports of the DC fan Series Coolers. It is a normally open switch that closes on temperature rise. We recommend relaying and fusing the temperature switch and fan.



FAN CONTROLLED TEMPERATURE SWITCH

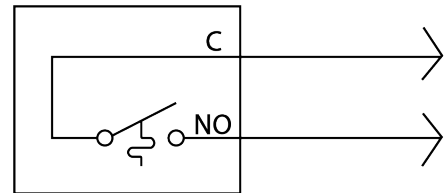
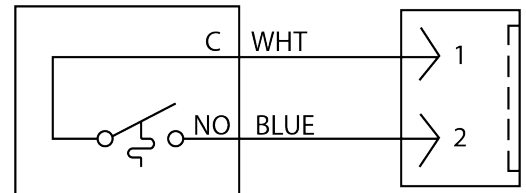
SPECIFICATIONS

SET POINT

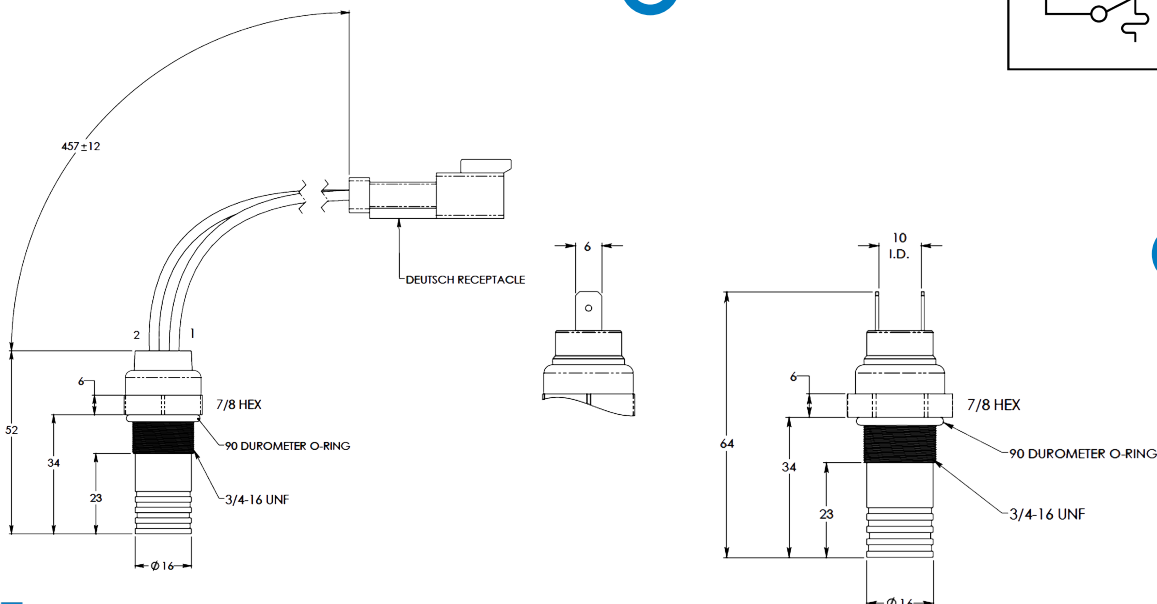
TC-140.....	145°F
TC-140-WL.....	145°F
TC-115.....	115°F
TC-115-WL.....	115°F

SET POINT TOLERANCE.....	±4
MAXIMUM TEMPERATURE.....	250°F
CURRENT RATING.....	5A
SWITCH BODY.....	BRASS
HOUSING.....	NYLON
WIRE LEAD.....	18"

SCHEMATIC



DIMENSIONS



MODEL

TC-140

TC-140-WL

TC-115

TC-115-WL